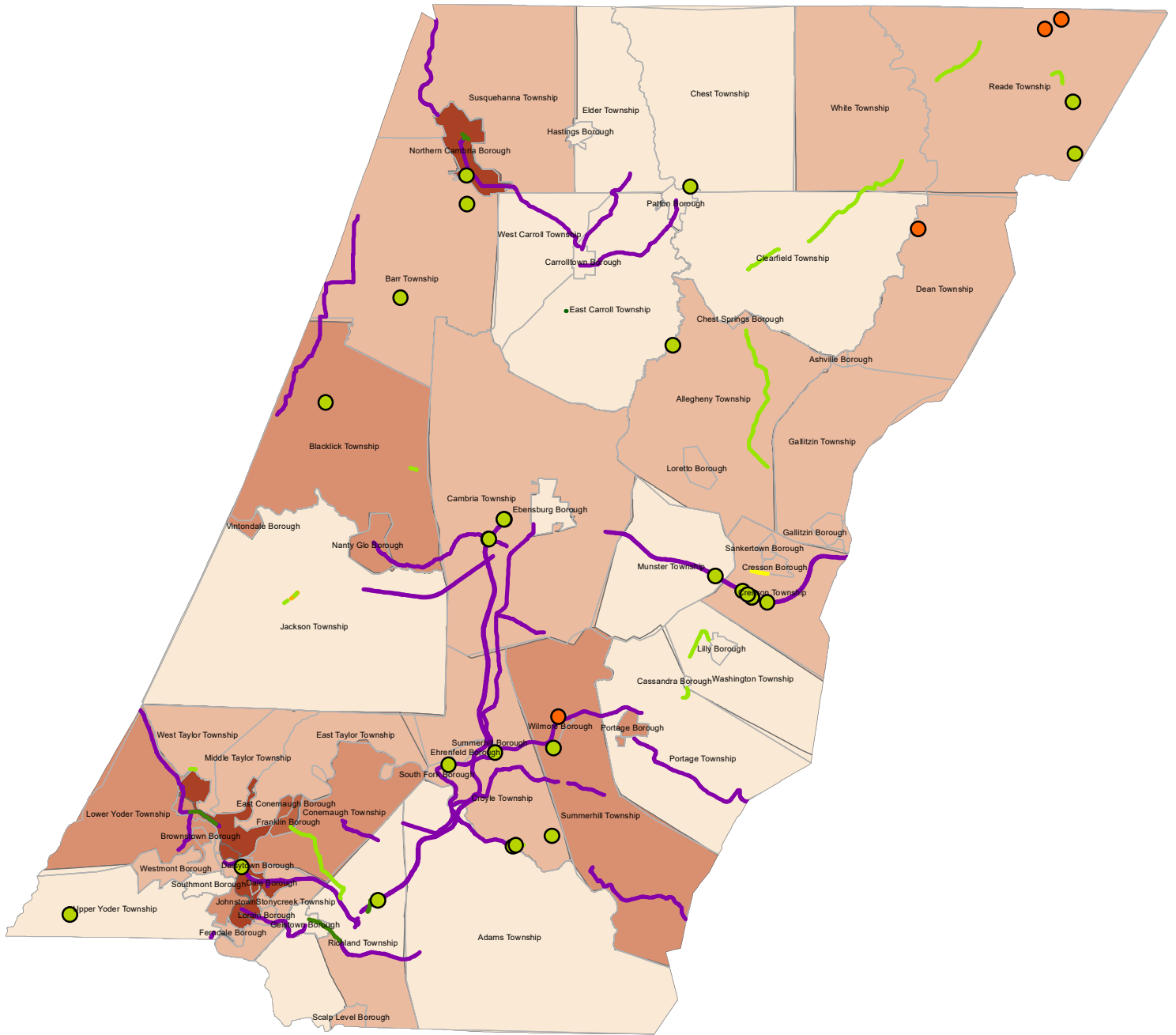


Cambria County FFY 2023-2034 Twelve Year Program (TYP) Update Environmental Justice Project Impact Analysis

Population Living Below the Poverty Line



Project Type

- Bridge Replacement
- Bridge Restoration
- Additional Lanes
- Congestion Reduction
- Highway Restoration
- New Alignment
- Preventive Maintenance
- Safety Improvement
- Stormwater Management

Census Tracts

Estimated Population Below the Poverty Line

- 4.9% - 9.0%
- 9.0% - 15.0%
- 15.0% - 20.0%
- 20.0% - 25.0%
- 25.0% - 52.1%

